

USER GUIDE

Software Version 5.3.21

What's new:

- Support for serial connection of Evac panels (Paso brand).
- Support of the ECLIPSE 8+ alarm control panel.
- Support of ESPA444 protocol.
- "Class Change" is now with selectable tone.
- "Silence Sounder" can now be performed by zones using inputs.
- Similar to Evac cycle the panel now have Alarm cycle (for voice evacuation purpose).
- Panel and Loop card versions may now be extracted by ProsTE.



ProsTE

PROGRAMMING SOFTWARE

Telctek
electronics

USER GUIDE

ProSTE

PROGRAMMING SOFTWARE

Software Version 5.3.21

What's new:

- Support for serial connection of Evac panels (Paso brand).
- Support of the ECLIPSE 8+ alarm control panel.
- Support of ESPA444 protocol.
- "Class Change" is now with selectable tone.
- "Silence Sounder" can now be performed by zones using inputs.
- Similar to Evac cycle the panel now have Alarm cycle (for voice evacuation purpose).
- Panel and Loop card versions may now be extracted by ProSTE.

Table of Contents

Welcome to ProSTE3

General Description4

Buttons' functions5

Adding new system.....6

Creating of new data base.....7

Loading of existing data base7

Connection with panel/module8

Reading a configuration.....9

Writing a configuration.....10

Reading the LOG file.....11

Setting the time and day.....12

Verifying configurations.....13

Verification list14

Automatic updates14

ProsTE (**P**rogramming **S**oftware **T**eletek **E**lectronics) is a programming tool for products designed and distributed by [Teletek Electronics JSC](#). The software allows fast and user-friendly programming to the benefit of the installers. With ProsTE you can easily read and write new configurations to installed or new systems (alarm panels and communication modules). You can make your own data base with system configurations saved as TDF ([Teletek Data File](#)) - a special file format for creating and saving of ProsTE system configurations files.

The panels are easily programmed via RS232 or USB connection.

With ProsTE software (**5.3.21**) you can directly program:

- **IRIS Panel** - Addressable fire alarm panel
- **SIMPO Panel** - Addressable fire alarm panel
- **REPEATER Iris/Simpo** – Repeater panel
- **TTE GPRS Standard** - Communication module
- **TTE GPRS Simple** - Communication module
- **TTE LAN** - Communication module
- **TTE COMBO** - Communication module
- **AJAX GSM GPRS** – Communication module
- **AJAX GPRS Simple** – Communication module
- **AJAX LAN** – Communication module
- **ARGUS** – Communication module
- **ECLIPSE 8** – Alarm control panel, 8 zones, 1 area
- **ECLIPSE 8+** - Alarm control panel, 16 zones, 3 areas
- **ECLIPSE 16** - Alarm control panel, 16 zones, 3 areas
- **ECLIPSE 32** – Alarm control panel, 32 zones, 8 areas
- **ECLIPSE 99** – Alarm control panel, 99 zones, 16 areas
- **Eclipse Strings** – Eclipse text pool
- **BRAVO** – Wireless alarm control panel, 16 zones, 1 area
- **CA 62** - Alarm control panel, up to 12 zones, 2 independent groups
- **CA 40** - Alarm control panel, 6 zones, 1 group
- **VEGA 6** - Alarm control panel, 6 zones, 1 group
- **TP 2000** – Transmitter unit
- **TP 2000 Serial** – Transmitter unit for serial connection

© All rights reserved.

This software is developed, updated, upgraded and distributed from Teletek Electronics JSC company.

Teletek Electronics JSC reserves the rights to modify, change and expand the contents of this software and supporting help files for improving the functionality of the product. Contents and specifications of the software are subject to change without notice.

Teletek Electronics JSC is not responsible for software products that are illegally changed, modified and expanded from other companies or third parties.

This software and supported help files contain information which is property of Teletek Electronics JSC. No part of this publication may be reproduced, copied or stored into retrieval system or distributed without prior written permission of Teletek Electronics JSC.

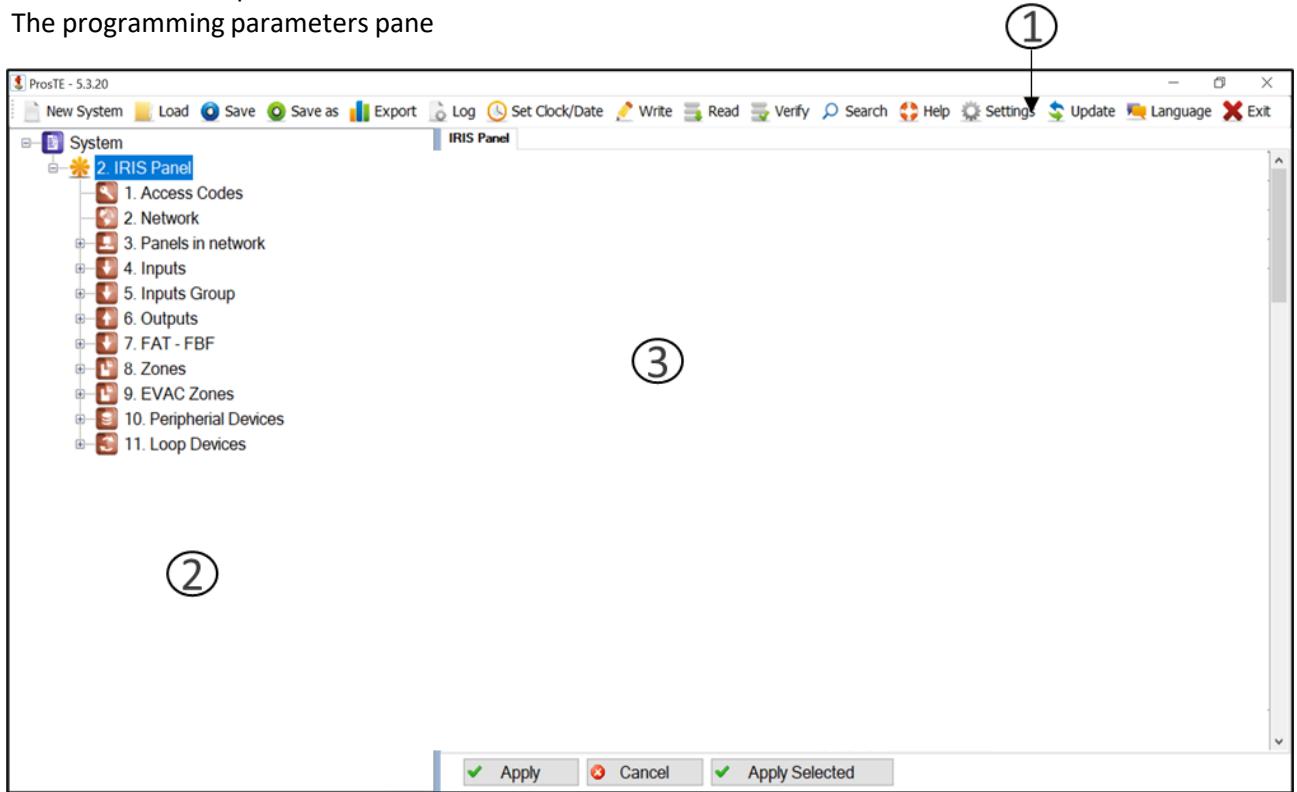
This software is developed only for programming and operation with systems (alarm panel and modules) produced from Teletek Electronics JSC.

General Description

The ProSTE Software is a user-friendly program for easy and quick programming of intruder and fire alarm control panels, and communication modules.

The program has three basic panes:

1. Functional buttons pane
2. The tree-structure pane
3. The programming parameters pane


















Buttons Functions

1. Functional buttons on the work bar

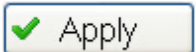

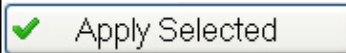
The functional buttons are separated into two groups:

a) common - these are buttons for operating with the program, these buttons are always active.

b) specialized - these buttons are for operating with a system (panel or module), they are active only when a system menu is selected.

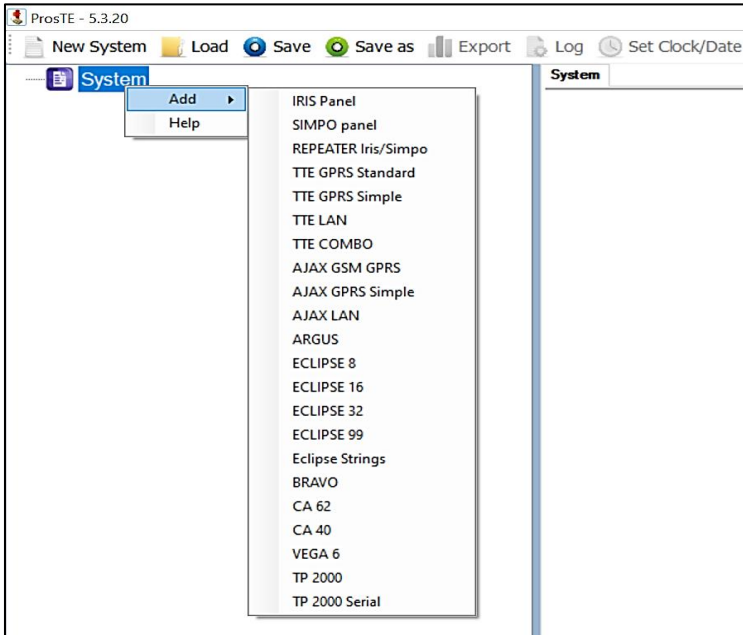
Button	Function
 New System	Clear all the opened in the tree-structure pane systems and open a new system for programming.
 Load	Open a previously saved system configuration.
 Save	Save the current open system configuration.
 Save as	Save a new system configuration.
 Export	Export the panel and loop card versions.
 Log	Read the memory log file for the events in the system.
 Set Clock/Date	Set a new time and date in the system.
 Write	Write the new settings to the system memory.
 Read	Read the parameters set to the system memory.
 Verify	List the differences between the set parameter configuration in the program and the real system configuration.
 Help	Run the Help file.
 Settings	Enable or disable the automatic update of the software.
 Update	Check for available updates of the software.
 Language	Change the current language of the menus.
 Exit	Close the program

2. Buttons on the programming pane

Button	Function
	Save the entered data in programming parameters pane for the current system configuration.
	Cancel the entered data in programming parameters pane for the current system configuration.
	Make the setting for more than one option in cases when the settings are similar for more parameters, i.e. for example when the settings for one output (PGM) have to be set to all other outputs.

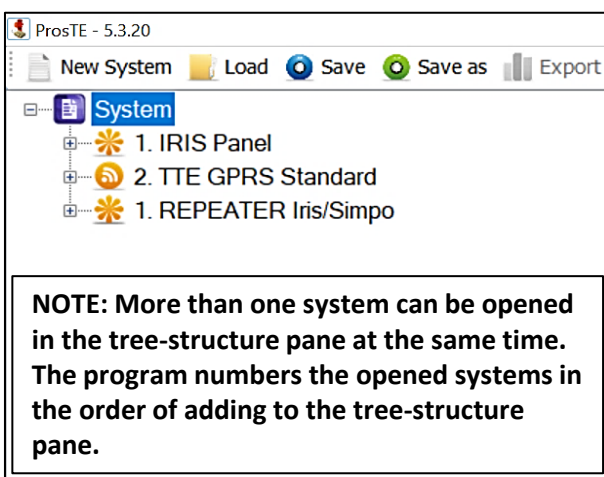
Adding a New System

1. In the tree-structure pane select the "**System**" menu and click with the right button.
2. From the drop-down menu select the option "**Add**".
3. Choose the type of the panel or module you will program.



ATTENTION: If you did not find a panel or module in the drop-down menu the possible reason is that the system is not selected during the initial installation of the software. You have to reinstall the ProsTE software and select "Full Installation" option with all systems checked on.

4. The programming menus for the selected panel or module will appear as a tree-structure in the left pane of the screen.



5. Click on the "+" icon to view all the programming menus for the control panel or module.

Creating of New Data Base

More than one system configuration can be saved in one TDF (Teletek Data File) - a special file format for creating and saving of ProsTE system configurations file. For example in one file you can include CA62, ARGUS module and AJAX GSM/GPRS system configurations and save them for a certain site database.

To save a current system configuration:

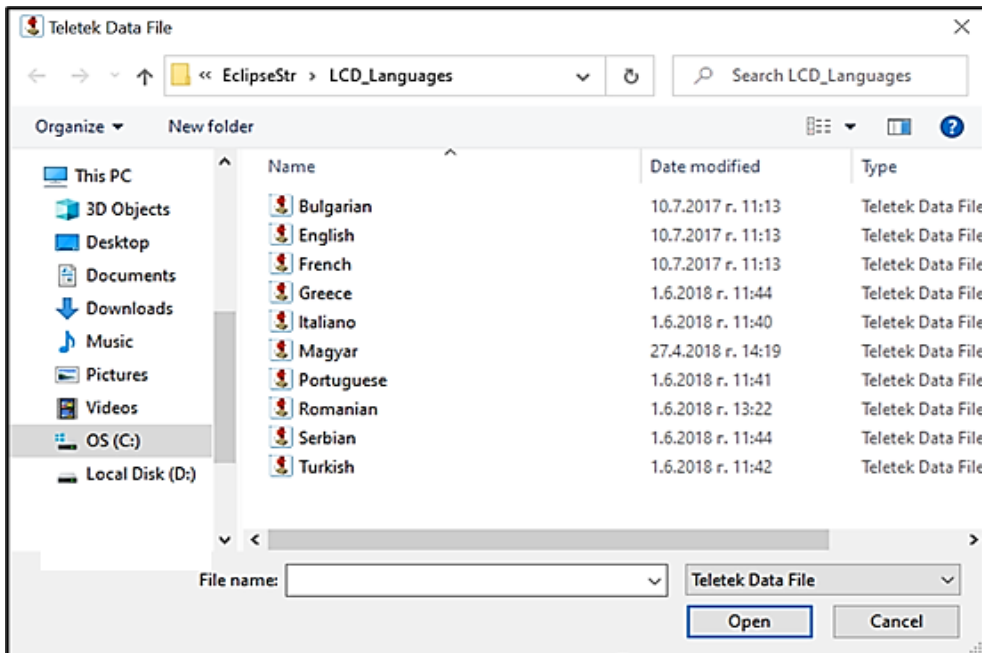
1. Make the settings in the currently opened system configuration. Apply the changes to every menu of the system.
2. Press the **"Save as"** button.
3. In the opened dialog window select a path and folder.
4. Type a name for your system configuration and press **"Save"** button. The system configuration will be saved as a TDF (Teletek Data File) - a special file format for creating and saving of ProsTE system configurations file.

Loading of Existing Data Base

ATTENTION: Loading an existing system configuration closes all running systems without saving! We recommend to save and close all running system configurations before load an existing file from database.

To load an existing system configuration:

1. Click on the **"Load"** button.
2. Choose a previously saved system configuration from the open window:





3. Click on **"Open"** button. The system configuration will appear as a tree-structure menus on the left side of the screen.

ATTENTION: The ProSTE software can communicate with only one system (panel or module) at the same time, no matter how many systems are opened in the tree-structure on the left. You must NEVER disconnect the cable between the panel/ module and the computer while reading or writing system configuration. The connecting cable can be removed only after displaying a system message for successful ending process: reading or writing system configuration, read LOG file, verifying systems.

General rules for connecting to panel/ module:

- ❖ To read and write system configurations you must realize a connection between the ProSTE software and the panel/ module. The connection is via RS232 or USB cable - that depends on the panel/module type.
- ❖ Connecting to alarm systems CA62, CA40, VEGA6 and module ARGUS is required a specialized ProSTE cable.
- ❖ Connect the RS232 or USB cable to an enabled (free) COM port of the computer where ProSTE software is installed.
- ❖ There are two specialized buttons in the communication dialogue windows (Read, Write, Log, Verify, Set clock/date):

Button	Function
	Load a special XML* file with saved configuration for communication.
	Save a configuration for communication as XML* file.

**When the settings for connection with panel/ module are different from the default ones in communication dialogue window, you can save them as XML file. In this way you can load the specific settings for communication instead enter them every time when connecting to a panel or module.*

- The software will ask for a password every time when connecting to panel or module.

ATTENTION: The password may be different according to the panel or module.

By default the manufacturer has set the following password combinations:

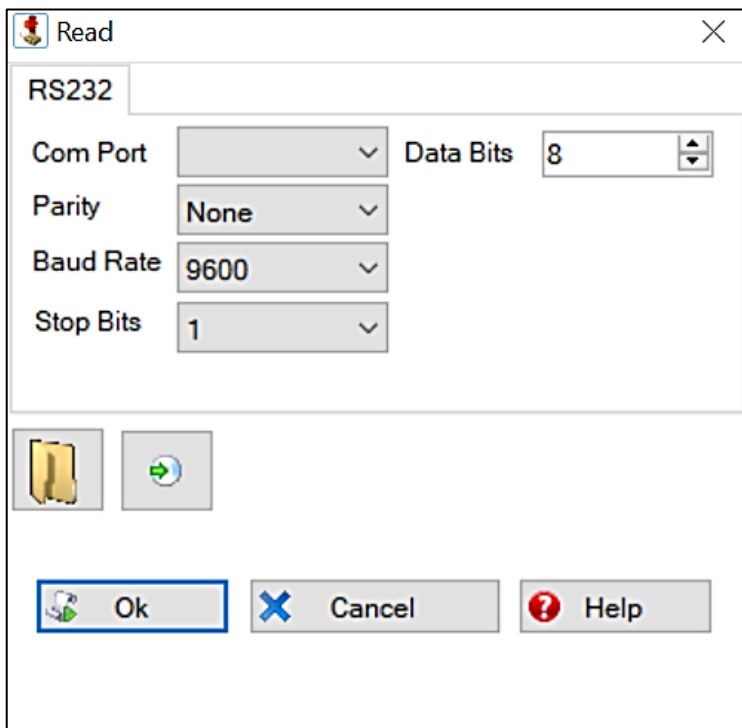
- Module ARGUS - 7777
- Module AJAX GSM/GPRS - 1234
- Module AJAX LAN - 1234
- Alarm panel AVA - 1234
- Alarm panel CA40 - 7777
- Alarm panel CA62 - 1234
- Alarm panel VEGA6 - 7777
- Fire alarm panel IRIS - 3333

- Connecting to panel/ module is required for:
 1. Reading a system configuration
 2. Writing a system configuration
 3. Reading the LOG file4.
 4. Setting the time and date
 5. Verifying the parameters of a set and current configuration.

ATTENTION: The manufacturer strongly recommends first to read the panel/module configuration to avoid any system errors and troubles. The initial reading of a configuration is useful for cases you want to see what is the current set system configuration and save it in a data base before changing!

To read a system configuration:

1. Connect the panel/module to an enabled (free) COM port of the computer where the ProsTE software is installed. Use RS232 or USB cable according the system configuration.
2. Run the ProsTE software.
3. Choose "**System**"-"**Add**" and select the desired panel or module for programming.
4. Select the first menu. The special buttons on the functional pane become active.
5. Choose the "**Read**" button. A dialogue window is opened:



6. Choose the type of connection - the settings may vary according the selected system (panel or module). The specifics for connecting to any system are listed in details in the respective help files for it. ***If you are not sure for the type of connection to your system ask your local distributor.***
7. Choose a COM port for communication in the "**Com Port**" field. The program offers a list with enabled COM ports. Choose those COM port to which the system is physically connected.
8. Do other settings if necessary and click "**Ok**".
9. In the "**Additional Parameters**" window enter a valid password and click "**Ok**".
10. Wait the process for reading configuration to end. A system message informs if the connection between the system and the software is successful - the system configuration can be programmed from the menus in the tree-structure.

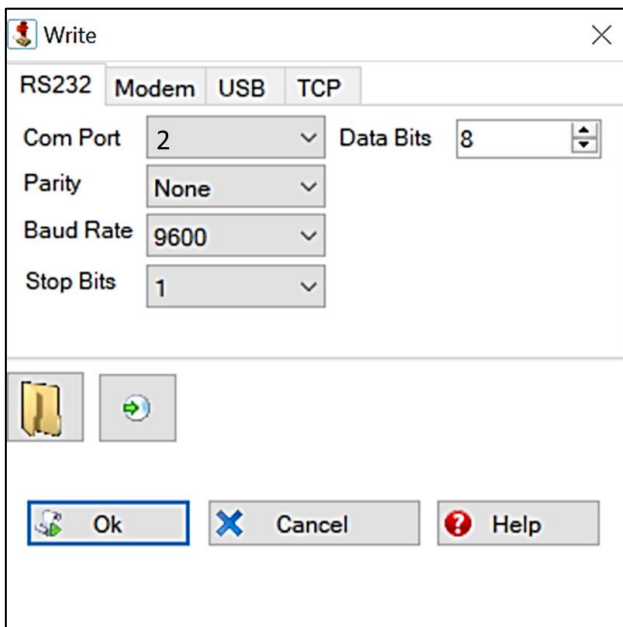
ATTENTION: The manufacturer strongly recommends first to read the panel/ module configuration to avoid any system errors and troubles. The initial reading of a configuration is useful for cases you want to see what is the current set system configuration and save it in a data base before changing!

NOTE: You can write a system configuration also after loading a ready TDF file from a data base.

To write a system configuration*:

*(*If there is already open a system configuration and the new settings are applied, you can skip the steps 1, 2 and 3).*

1. Connect the panel/ module to an enabled (free) COM port of the computer where the ProsTE software is installed. Use RS232 or USB cable according the system configuration.
2. Run the ProsTE software.
3. Choose "**System**"-"**Add**" and select the desired panel or module for programming.
4. Select the first menu. The special buttons on the functional pane become active.
5. Choose the "**Write**" button. A dialogue window is opened:

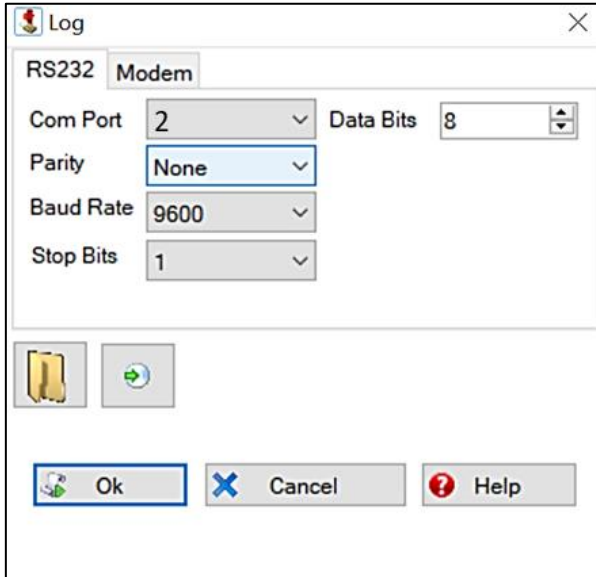


6. Choose the type of connection - the settings may vary according the selected system (panel or module). The specifics for connecting to any system are listed in details in the respective help files for it. If you are not sure for the type of connection to your system ask your local distributor.
7. Choose a COM port for communication in the "**Com Port**" field. The program offers a list with enabled COM ports. Choose those COM port to which the system is physically connected.
8. Do other settings if necessary and click "**Ok**".
9. In the "**Additional Parameters**" window enter a valid password and click "**Ok**".
10. Wait the process for writing configuration to end. A system message informs if the writing of the new configuration is successful.

Reading the LOG File

To read the system memory file(LOG):

1. Connect the panel/ module to an enabled (free) COM port of the computer where the ProsTE software is installed. Use RS232 or USB cable according the system configuration.
2. Run the ProsTE software.
3. Choose "**System**"-"**Add**" and select the desired panel or module for programming.
4. Select the first menu. The special buttons on the functional pane become active.
5. Choose the "**Log**" button. A dialogue window is opened:



6. Choose the type of connection - the settings may vary according the selected system (panel or module). The specifics for connecting to any system are listed in details in the respective help files for it. **If you are not sure for the type of connection to your system ask your local distributor.**
7. Choose a COM port for communication in the "**Com Port**" field. The program offers a list with enabled COM ports. Choose those COM port to which the system is physically connected.
8. Do other settings if necessary and click "**Ok**".
9. In the "**Additional Parameters**" window enter a valid password and click "**Ok**".
10. Wait the process for reading the LOG file to end. A list with events is open:

Events List

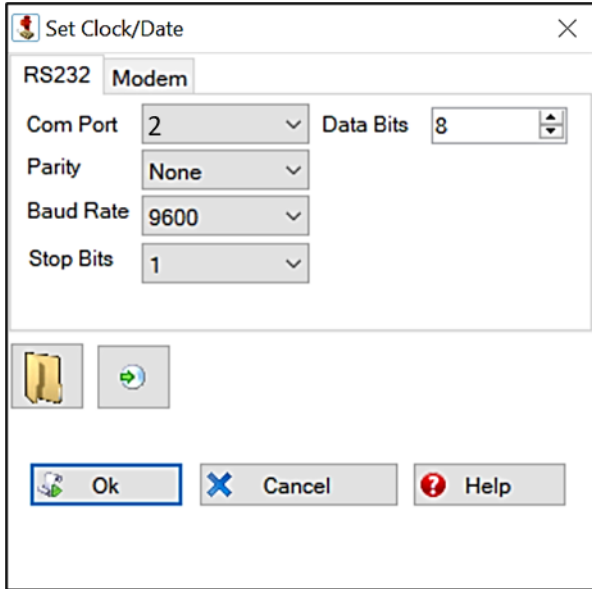
The system events are listed in a table. The fields' contents are as follows:

- **Event** - This is a list with system events. The events may differ according the type of the panel.
- **Zone** - Shows the number of a zone, where the event is generated.
- **User** - Shows the user number.
- **Month** - Month, when the event is generated.
- **Day** - Day, when the event is generated.
- **Hour** - Hour, when the event is generated.
- **Mins** - Minutes, when the event is generated.

Setting the Time and Day

To set the date and time of panel or module:

1. Connect the panel/module to an enabled (free) COM port of the computer where the ProsTE software is installed. Use RS232 or USB cable according the system configuration.
2. Run the ProsTE software.
3. Choose "**System**"-"**Add**" and select the desired panel or module for programming.
4. Select the first menu. The special buttons on the functional pane become active.
5. Choose the "**Set Clock/Date**" button. A dialogue window is opened:



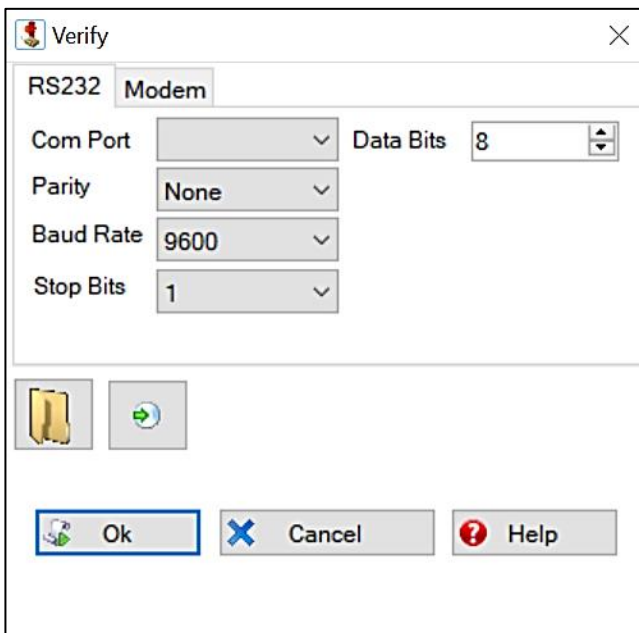
6. Choose the type of connection - the settings may vary according the selected system (panel or module). The specifics for connecting to any system are listed in details in the respective help files for it. **If you are not sure for the type of connection to your system ask your local distributor.**
7. Choose a COM port for communication in the "**Com Port**" field. The program offers a list with enabled COM ports. Choose those COM port to which the system is physically connected.
8. Do other settings if necessary and click "**Ok**".
9. In the "**Additional Parameters**" window enter a valid password and click "**Ok**".
10. Wait the process for setting of the current time and date to end. A system message informs if the settings are successful.

Verifying Configurations

This is option for comparing and showing the differences between parameters of a current opened system configuration and those set on the panel/ module memory.

To compare the current open configuration with the one set on panel/ module:

1. Connect the panel/module to an enabled (free) COM port of the computer where the ProsTE software is installed. Use RS232 or USB cable according the system configuration.
2. Run the ProsTE software.
3. Choose "**System**"-"**Add**" and select the desired panel or module for programming.
4. Select the first menu. The special buttons on the functional pane become active.
5. Choose the "**Verify**" button. A dialogue window is opened:



6. Choose the type of connection - the settings may vary according the selected system (panel or module). The specifics for connecting to any system are listed in details in the respective help files for it. If you are not sure for the type of connection to your system ask your local distributor.
7. Choose a COM port for communication in the "**Com Port**" field. The program offers a list with enabled COM ports. Choose those COM port to which the system is physically connected.
8. Do other settings if necessary and click "**Ok**".
9. In the "**Additional Parameters**" window enter a valid password and click "**Ok**".
10. Wait until the process for reading and verifying ends. After successful connecting the program [lists the found differences](#).

Verification List

The differences between the current configuration and those set on panel memory is visualized in a table.

The information is as follows:

Difference in the current configuration / Panel name / Main menu / Submenu / Parameter

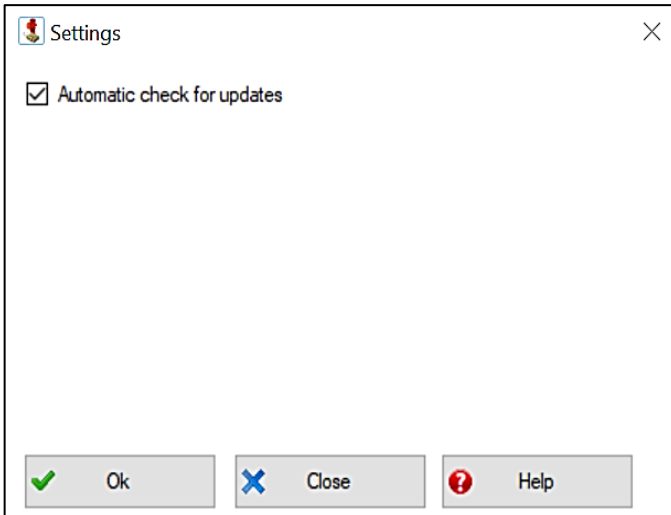
Automatic Updates

This option is accessible when the computer with installed ProsTE software has an Internet (LAN or Wireless) connection. With every running the software checks for new updates published on Teletek Electronics JSC official web site. If there is new files for update the program opens a system message. The user decides if to proceed with the update or to do it later.

After updating the ProsTE software has to be restarted.

To set automatic updates for ProsTE software:

1. Choose "**Settings**" button.
2. A dialogue window in open:



3. Check the "**Automatic check for updates**" field.
4. Confirm your choice with "**Ok**".

You can also check for available updates with single click on "**Update**" button.